

HAUS - HUT H



POTSDAMER PLATZ

AN ARCHITECTURAL ICON

Boutique space in a boutique building



Haus Huths interior spaces combined with its striking exterior, create an unrivaled first impression for clients, guests, and employees.





HISTORY

Haus Huth is a former wine house of the vintner Christian Huth. Built in 1912 by architects Conrad Heidenreich and Paul Michel, it survived World War II largely undamaged and is the only historic building remaining in the entire Potsdamer Platz quarter. It was most likely saved from the war by its solid steel construction – a precaution taken to withstand the weight of storing wine. As “The Last House at Potsdamer Platz” it became a symbol of Berlin’s destruction and subsequent division. In 1990, the building was incorporated into the planning of the Potsdamer Platz project. Under the supervision of Renzo Piano and Christoph Kohlbecker, the property was completely restored from 1994 to 1999. Since then, the limestone-shell façade shines once again in its former elegance.

A building lives many lives.



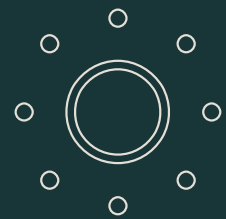
Ceiling Heights

3.40 m on Floor 1-4
2.55 m on Floor 5



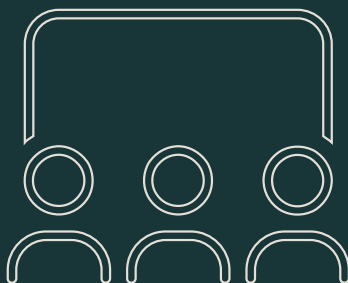
Terrace

2 roof top terraces



Well Lit

Highly efficient new LEDLighting



Event Space

Wappenzimmer, flexible event space with hospitality



Elevators

1 dedicated passenger elevator
1 dedicated goods lift
1 dedicated VIP elevator to parking lot



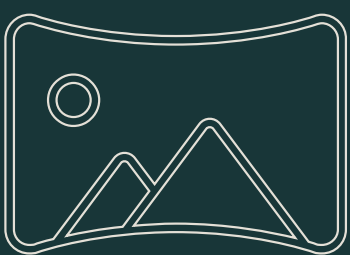
Parking Spots

4 VIP dedicated parking spots with additional parking spots available



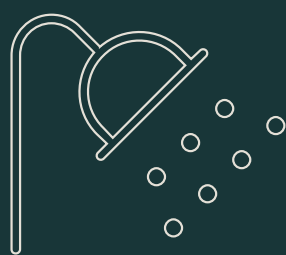
Connected

Data network + telephone network with CAT 7 wiring



360° View

Panoramic views across Potsdamer Platz



Showers

4 exclusive showers for Haus Huth tenants

Historic. Iconic.
Exclusive.



Haus Huth Terrace



STACK PLAN

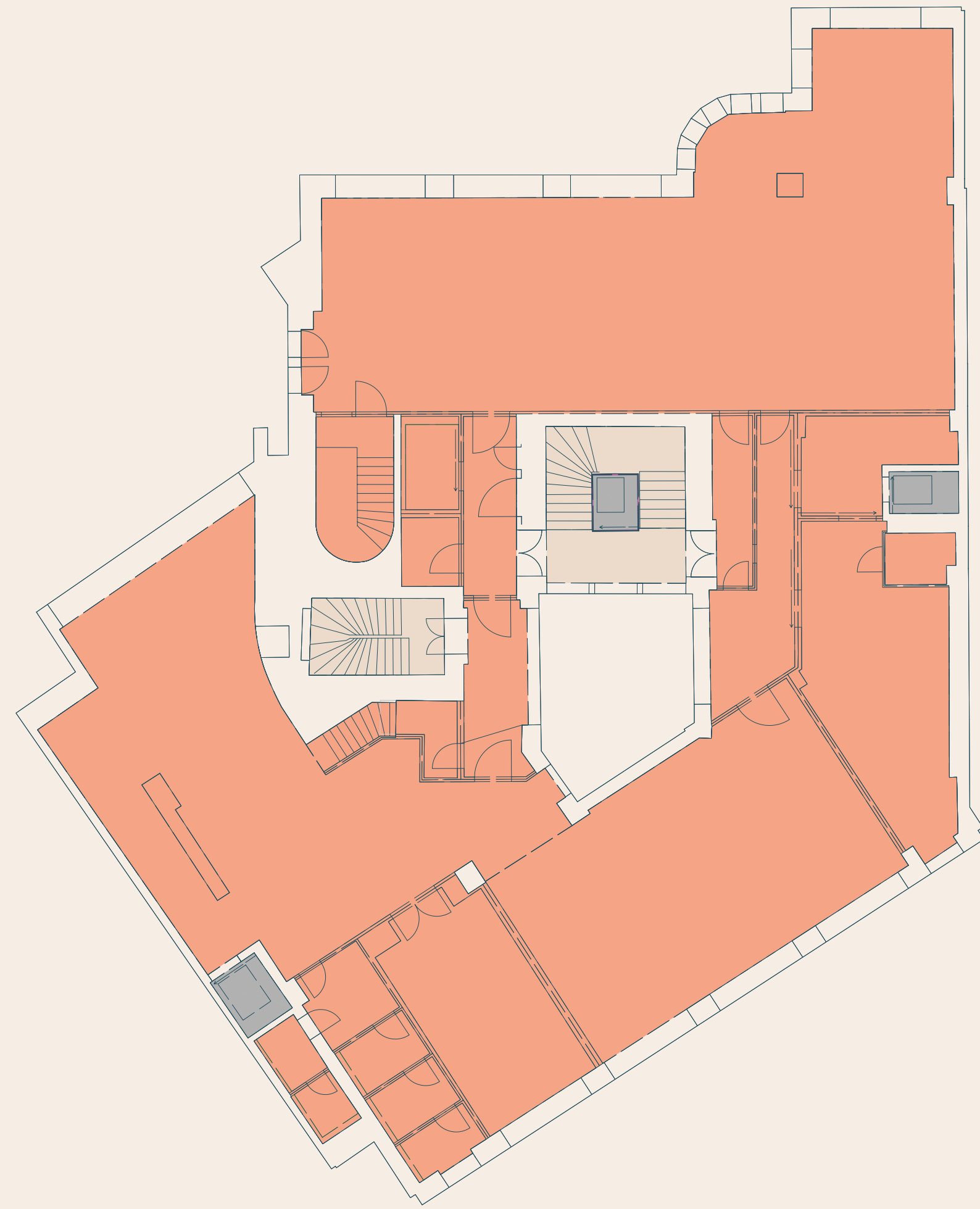


Roof Top Terrace

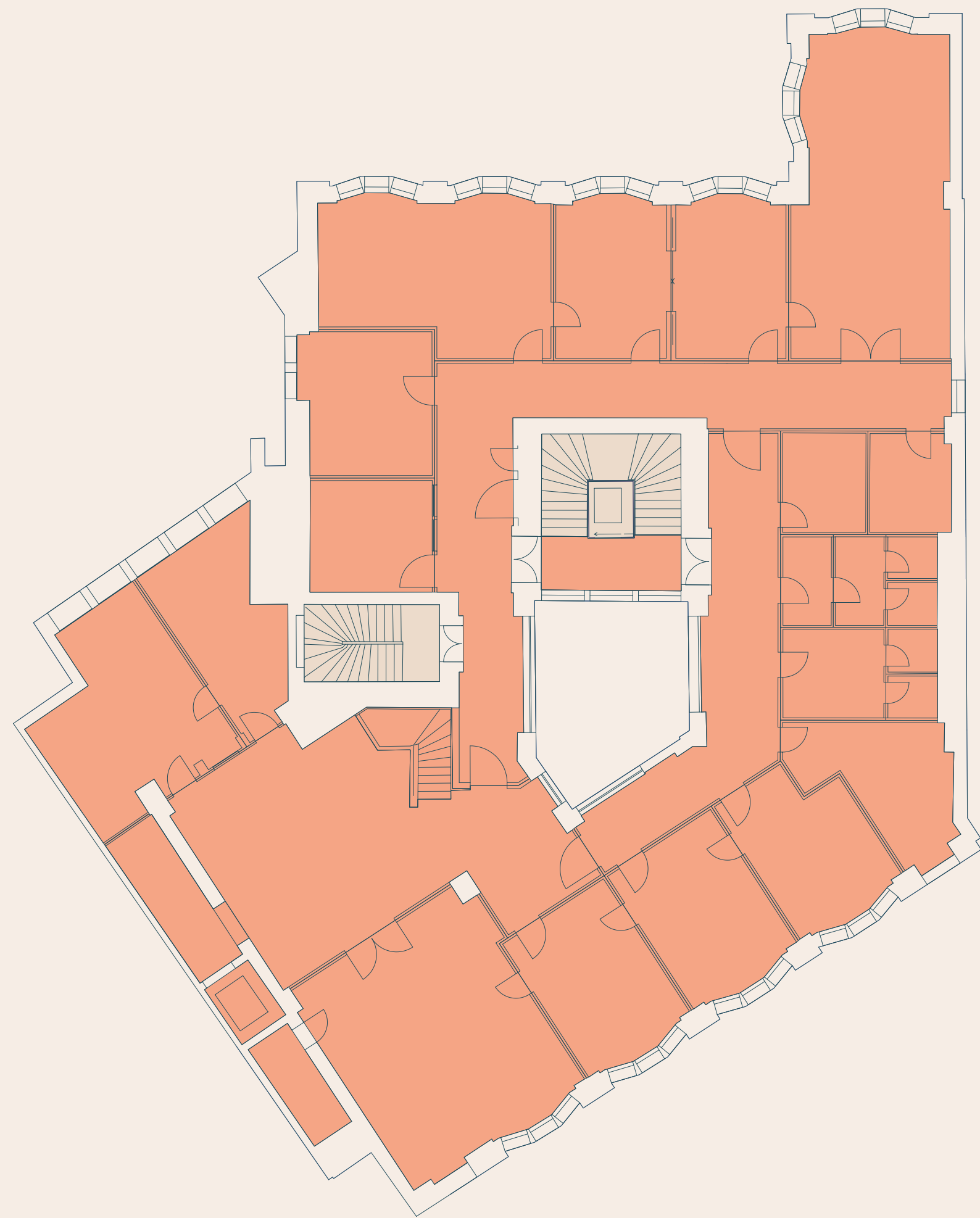
2,960 m²
of available office space
across 5 levels

Floor	Use	Tenant / Availability	Available m ²
5	Office	Available	537
4	Office	Available	576
3	Office	Available	617
2	Office	Available	607
1	Office	Available	623
Ground	Office/Retail/Gastro		-

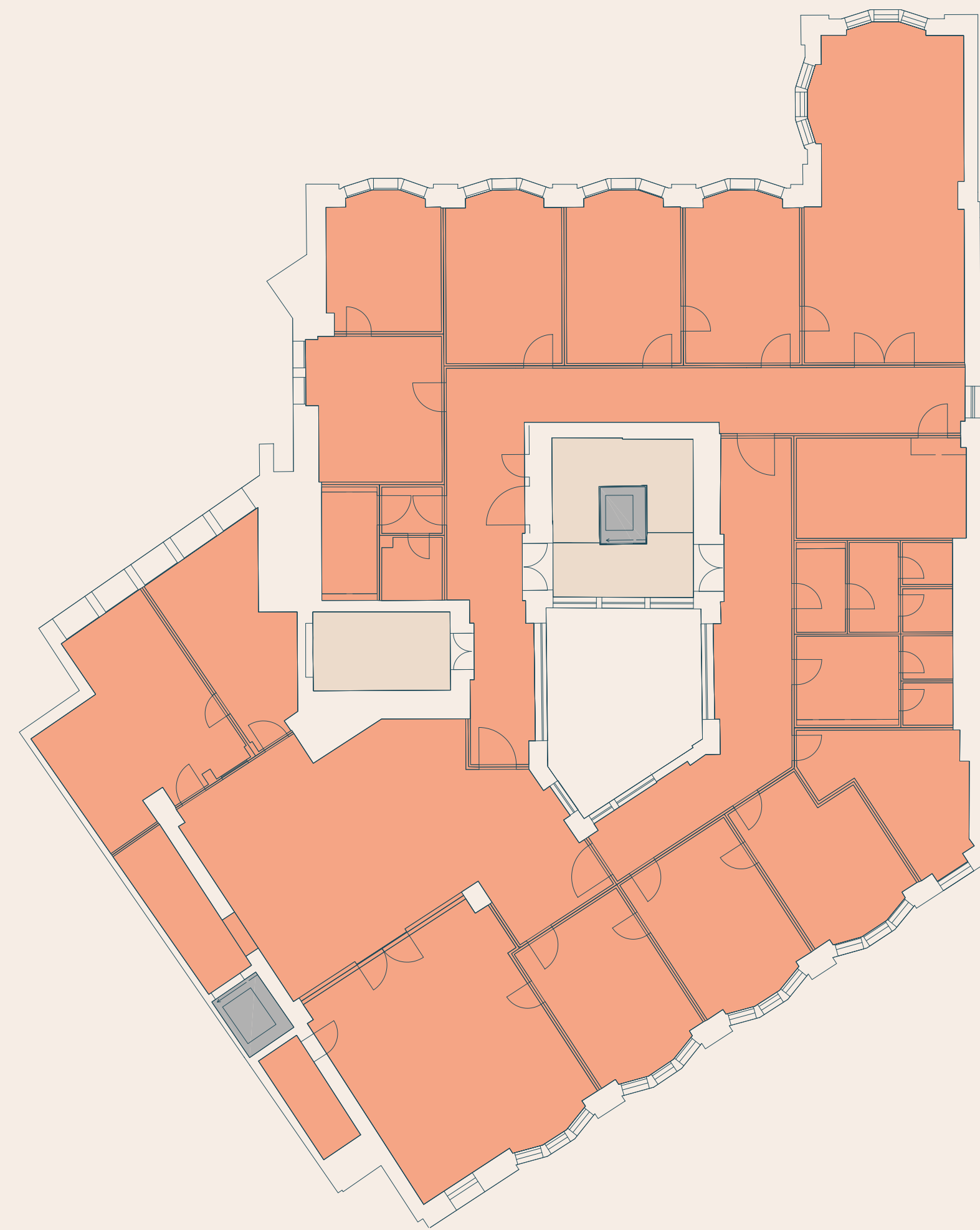




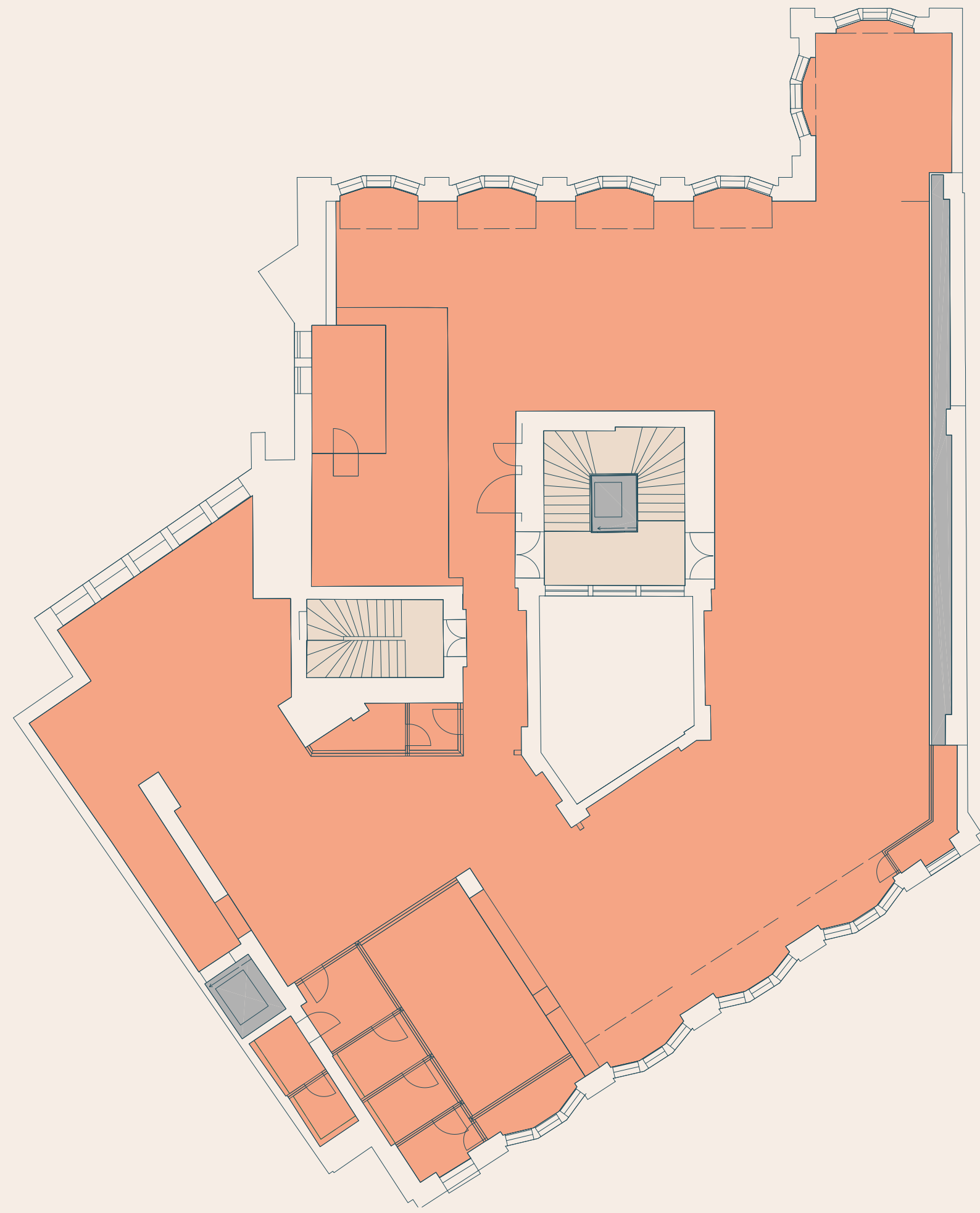
Level 1
623 *m² available*



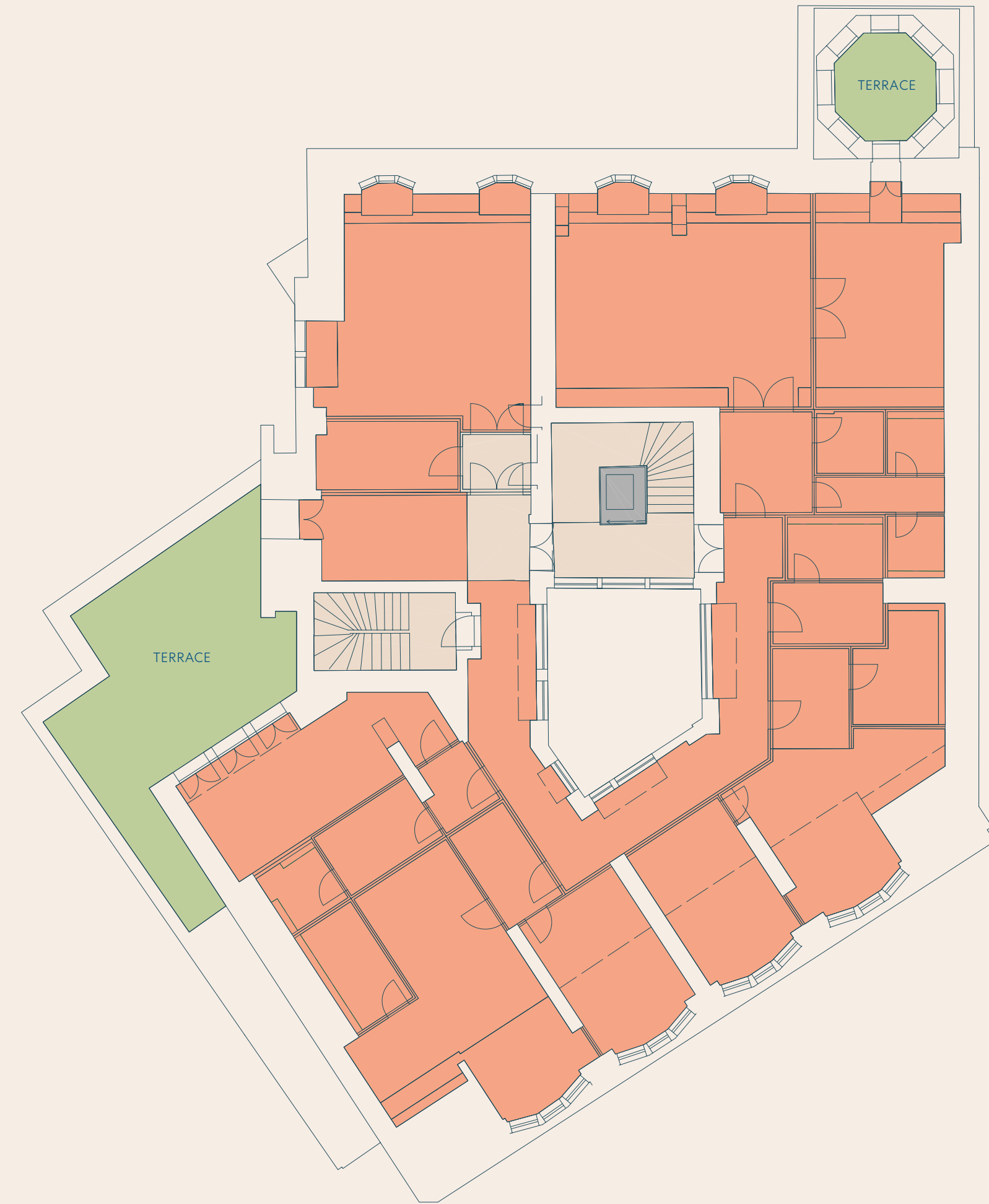
Level 2
607 *m² available*



Level 3
617 *m² available*



Level 4
576 *m² available*



Level 5
537 *m² available*



Discover a Piece
of Berlin's Past

A PLACE TO WORK

Potsdamer Platz includes 130,000 m² office space in total and offers workspace for 30,000 employees daily.



LinkedIn

INDUSTRIOUS

ZENTIVA

Aroundhome

SONY
PICTURES

TOLL COLLECT
service on the road

STRÖER

BAIN & COMPANY

janssen

Freshfields

Teleperformance

A PLACE TO DINE

With a total of 20 places to grab lunch or have a fine dining experience. Potsdamer Platz has an option for every moment of your day.



The best of Berlin is on your doorstep



MAREDO

Caffè e Gelato

Burgermeister

MANIFESTO
Market

weilands

FIVE GUYS

LOU
CAFÉ & BISTRO



essenza





POTSDAMER PLATZ

270,000 m² Total Estate Space

130,000 m² Office space

46,000 m² Retail Space

300+ Residential Units

2 Five Star Hotel

19 Cinema Screens

World-Class Theatres

Largest Casino in Berlin

2,000+ Underground Parking Slots



MOABIT

MUSEUM FÜR
NATURKUNDE

BERLIN
HAUPTBAHNHOF
SU

MITTE

HACKESCHER
MARKT

ALEXANDER
PLATZ
S

PRENZLAUER
BERG

MONBIJOU PARK

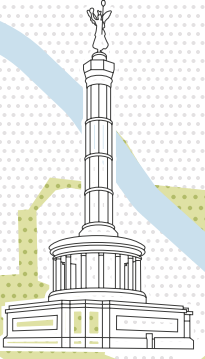


Berlin
Friedrichstrasse
SU



FERNSEHTURM

BRADENBURGER
TOR
SU



SIEGESSÄULE

DEUTSCHE
OPER

TECHNISCHE
UNIVERSITÄT BERLIN

TIERGARTEN

HAUS - HUTH
POTSDAMER PLATZ

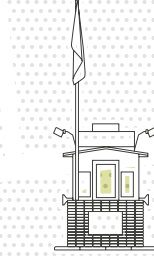
GENDARMENMARKT

FRIEDRICHSHAIN



ZOOLOGISCHER
GARTEN

CHARLOTTENBURG



CHECKPOINT
CHARLIE

EAST SIDE GALLERY

KADEWE

GROPIUS BAU

Mendelssohn-
Bartholdy-park
U

KREUZBERG

WILMERSDORF

Nollendorfplatz
U

GÖRLITZER
PARK

PARK AM
GLEISDREIECK

SCHÖNEBERG

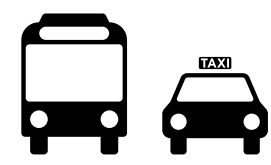
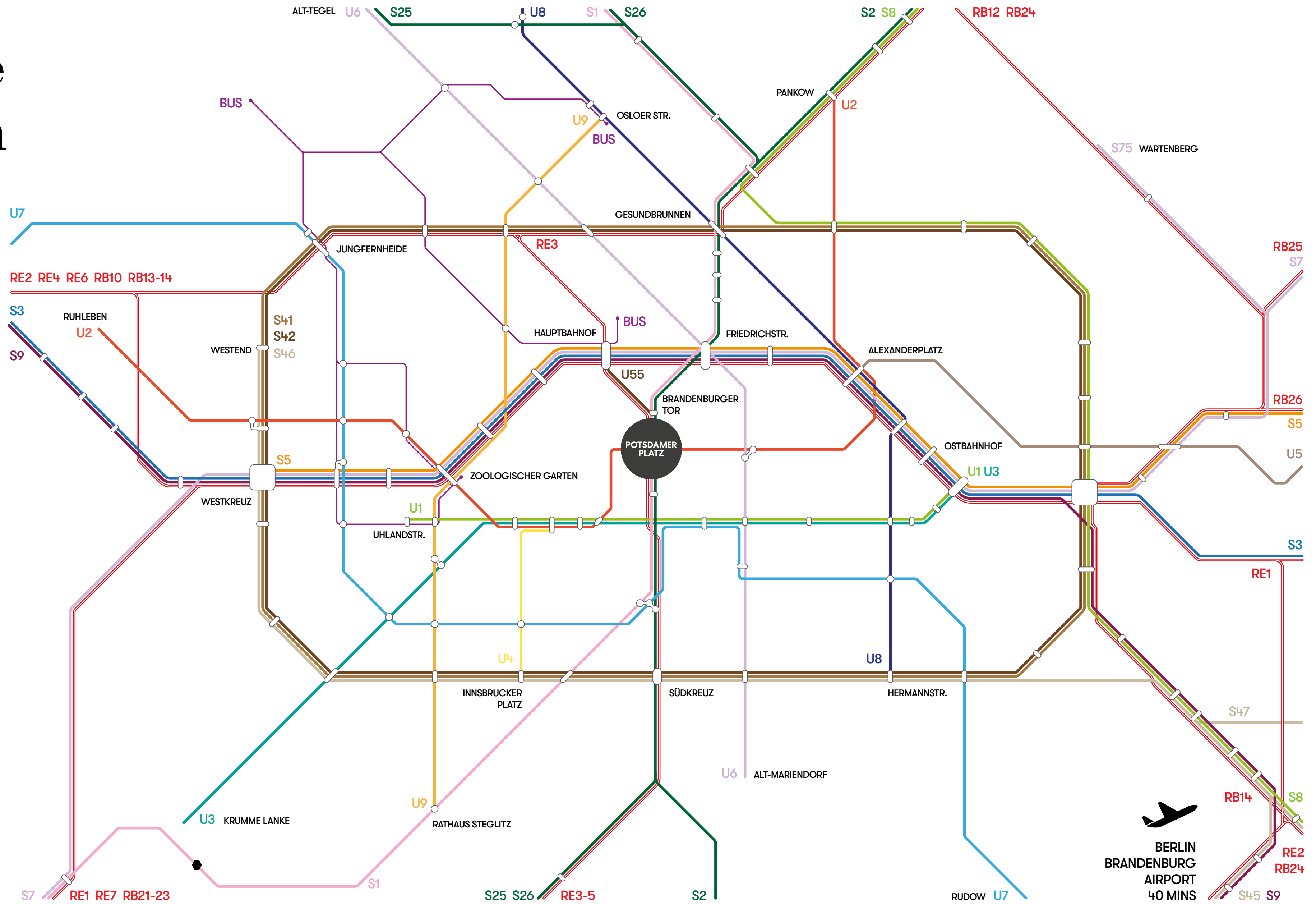
BERGMANNKIEZ

TEMPELHOFER
FELD

BERLIN
BRANDENBURG
AIRPORT

CONNECTIVITY

Easily accessible from all of Berlin



Hauptbahnhof 5 Mins
 Alexanderplatz 10 Mins
 Zoologischer Garten 10 Mins



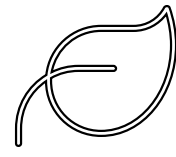
Brandenburger Tor 10 Mins
 Checkpoint Charlie 15 Mins
 Gendarmenmarkt 15 Mins

BERLIN BRANDENBURG AIRPORT 40 MINS

BROOKFIELD PROPERTIES



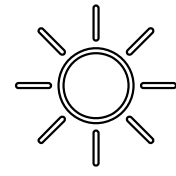
99% of the core office portfolio has a sustainability designation



Brookfield Properties is working diligently to mitigate our global carbon impact ahead of targets.

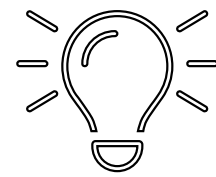


20% reduction in retail energy consumption since 2018

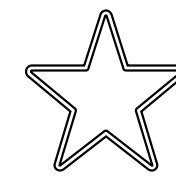


14MW of Solar Capacity was added to our retail portfolio

POTSDAMER PLATZ



Potsdamer Platz will be the first district to follow the Berlin Light Plan mitigating ambient light for wildlife and light pollution.



Potsdamer Platz is Well Health & Safety Rated



The newly pedestrianization of the public realm will increase trees by 30%, create raingardens to enhance potable water.



Bike infrastructure and a pedestrian zone will incentivize sustainable transit options



A sustainability first urban development

CERTIFICATIONS



CONTACTS

KATHARINA TREIBER

Senior Vice President

katharina.treiber@brookfieldproperties.com

+49 172 301 417 0

ANTONIA GERMELMANN

Senior Associate

antonia.germelmann@brookfieldproperties.com

+49 174 69 19 766

PABLO MOLL

Analyst

pablo.moll@brookfieldproperties.com

+49 176 1023 4046

www.potsdamerplatz.de

[@potsdamer_platz](https://www.instagram.com/potsdamer_platz)

[/potsdamerplatz](https://www.facebook.com/potsdamerplatz)



Brookfield
Properties