

**POTSDAMER  
PLATZ**

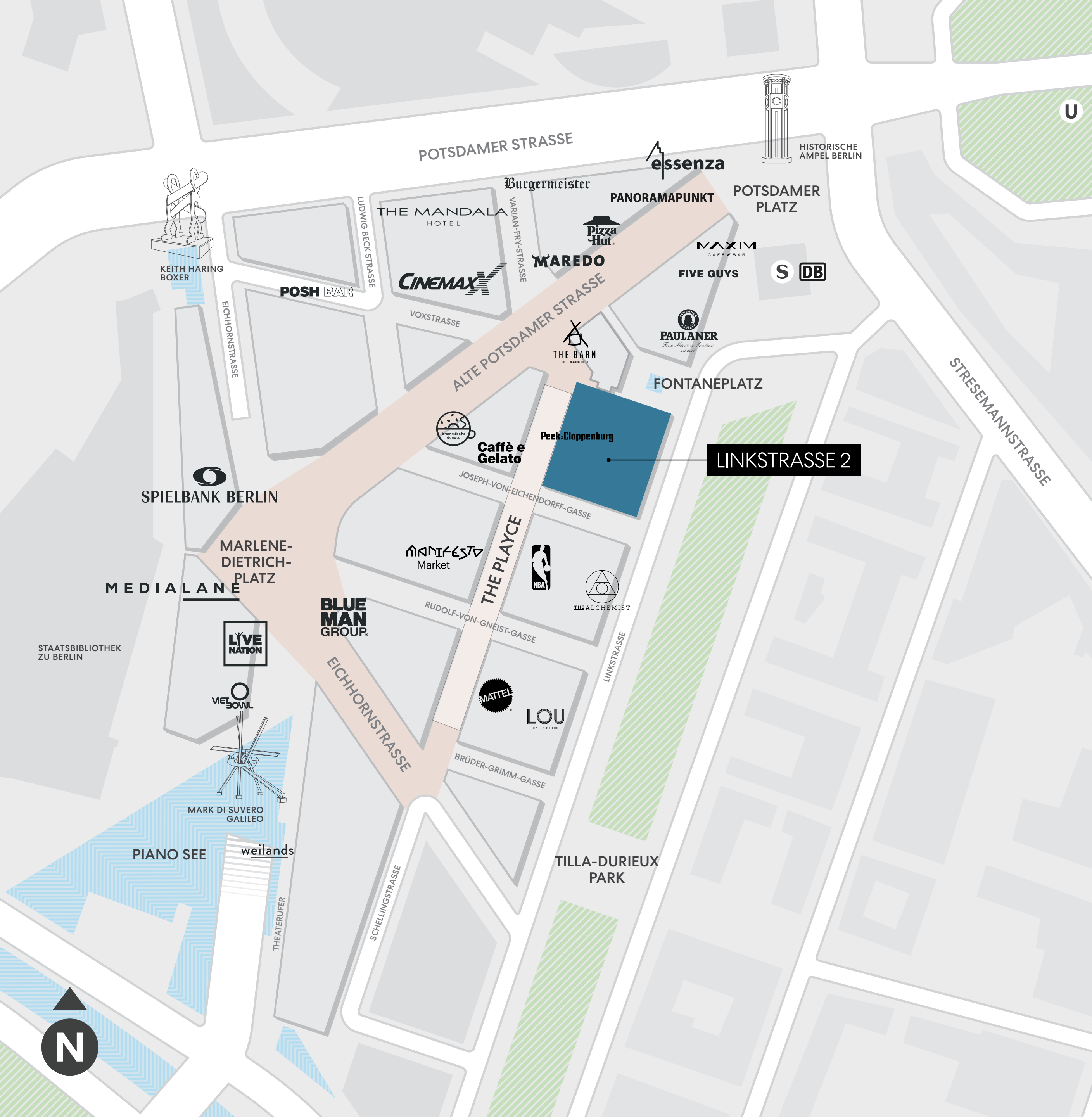
LINKSTRASSE 2











# BE AT THE CENTRE OF IT ALL

**270k**  
sqm total estate space

**130k**  
sqm office space

**46k**  
sqm retail space

**300+**  
residential units

**2**  
five star hotels

**19**  
cinema screens

World-class theatres

Berlin's largest casino

**2k+**  
underground parking slots





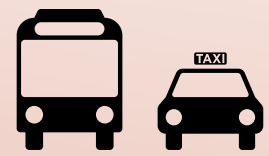
# MAKE YOUR MARK

Nestled in the heart of Berlin, **Linkstrasse 2** seamlessly blends productivity and convenience. With its thoughtfully designed workspaces that inspire creativity, coupled with its unparalleled transport connectivity, it stands perfect for professionals on the go.





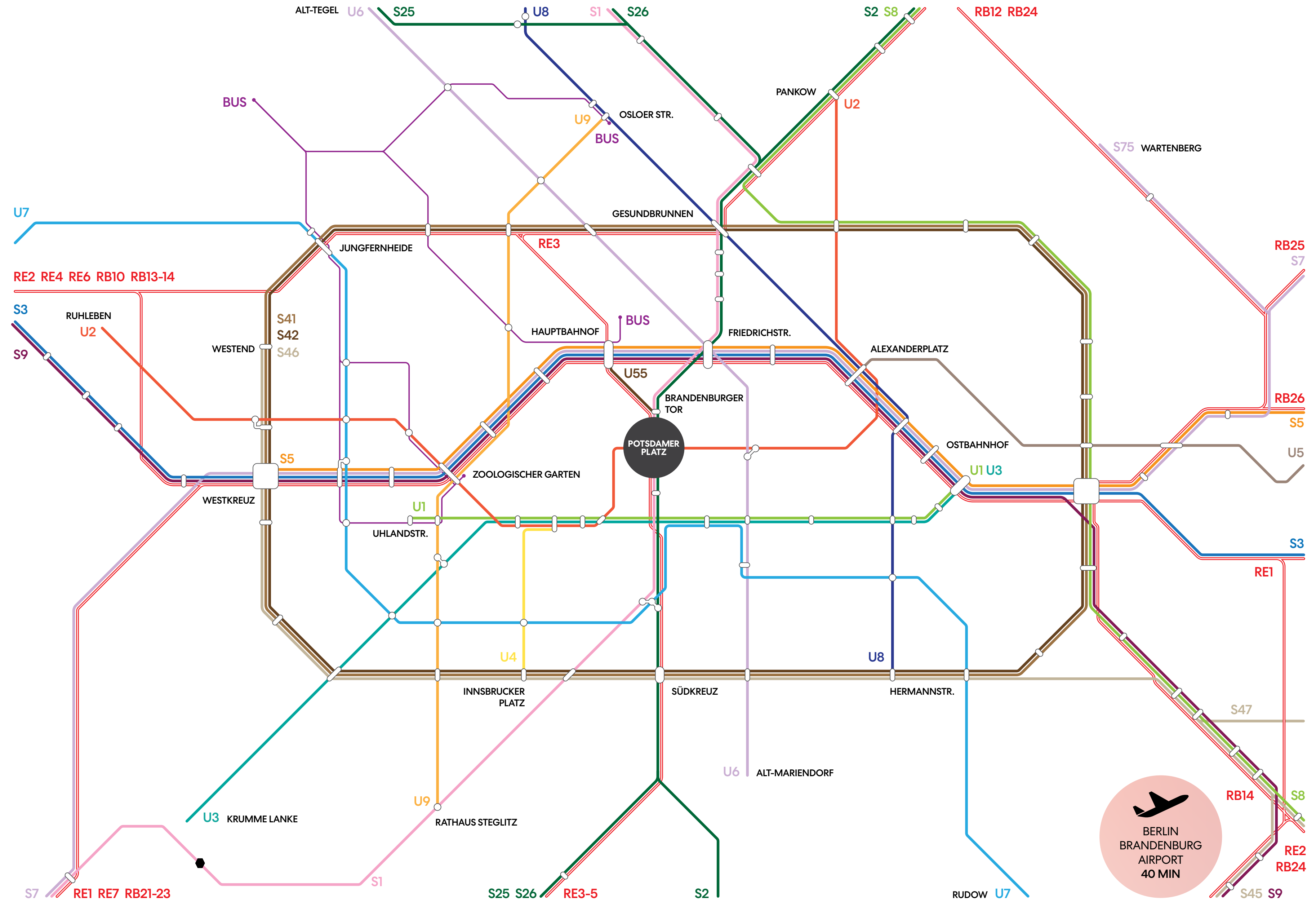
# EASILY ACCESSIBLE FROM ALL OF BERLIN



Hauptbahnhof	5 min
Alexanderplatz	10 min
Zoologischer Garten	10 min



Brandenburger Tor	10 min
Checkpoint Charlie	15 min
Gendarmenmarkt	15 min

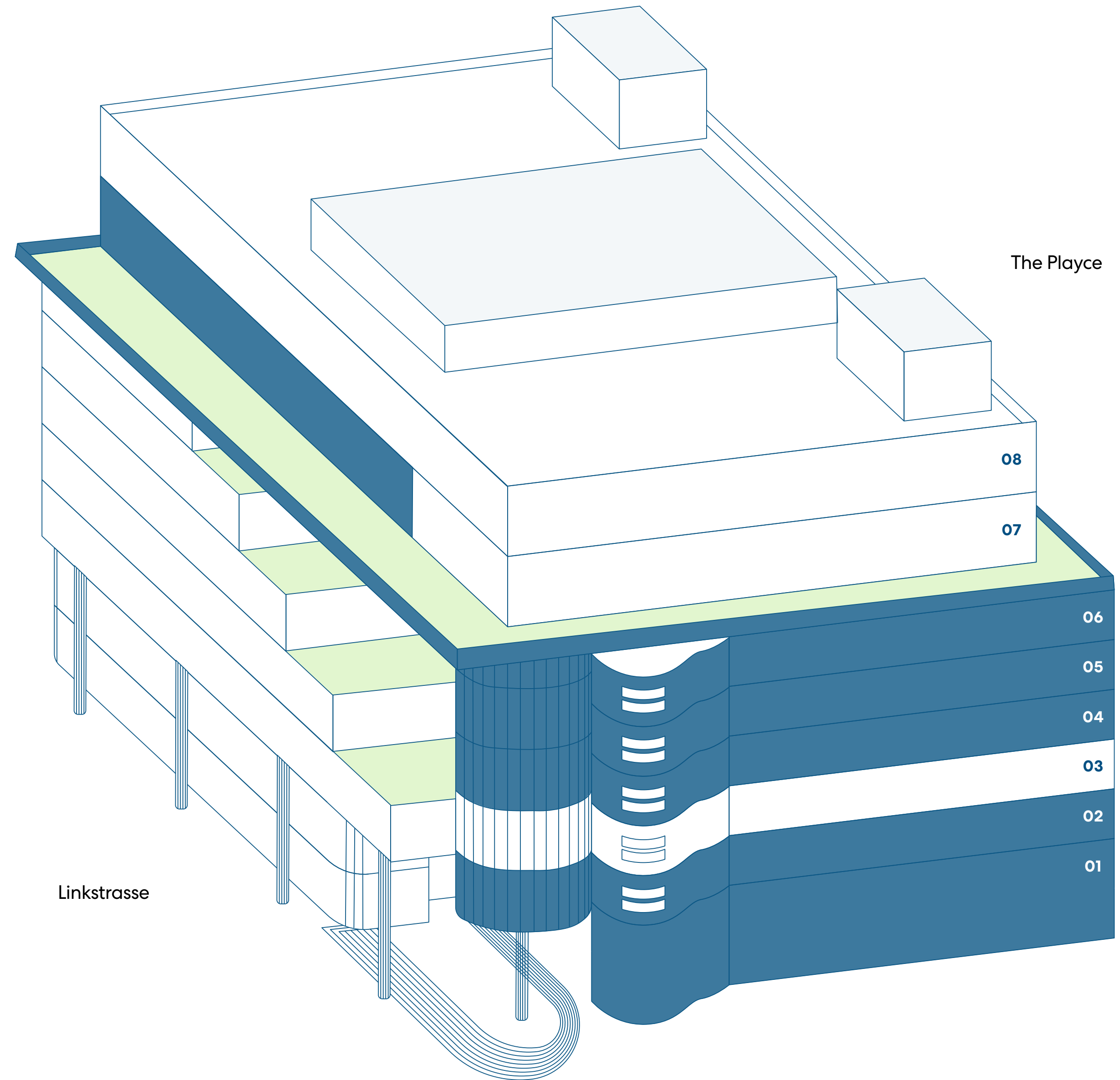




# YOUR NEW HQ SPACE

SEVENTH FLOOR	ca. 600 m <sup>2</sup>	94 m <sup>2</sup>
SIXTH FLOOR	ca. 426 m <sup>2</sup>	
FIFTH FLOOR	ca. 973 m <sup>2</sup>	
FOURTH FLOOR	ca. 737 m <sup>2</sup>	
SECOND FLOOR	ca. 1,203 m <sup>2</sup>	
FIRST FLOOR	ca. 319 m <sup>2</sup>	

- Available Office
- Terrace



Haus-Huth

Fontaneplatz





# FIRST FLOOR

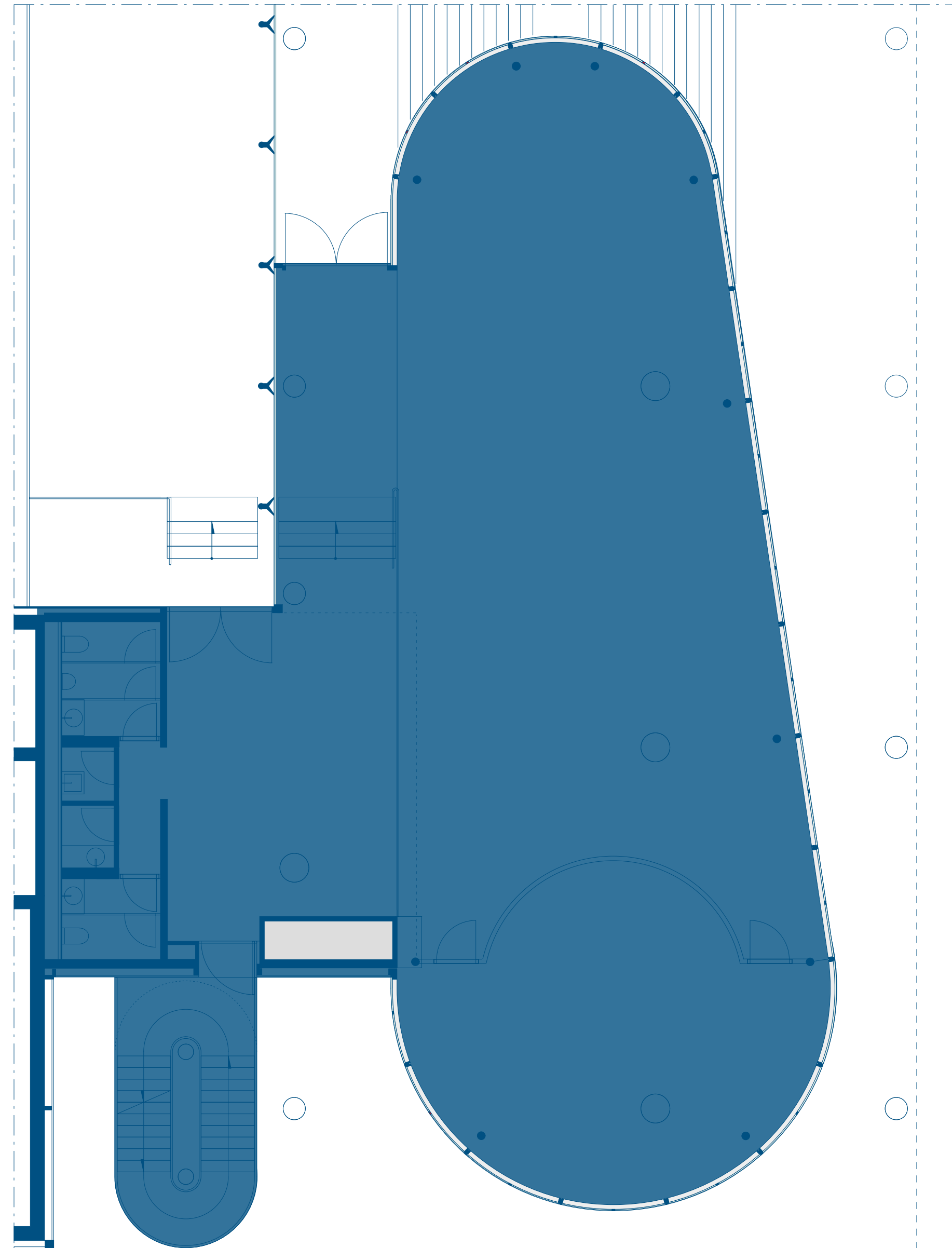
---

## 319 m<sup>2</sup>

Total lettable area approx.

Available from now

● Available Office





# SECOND FLOOR

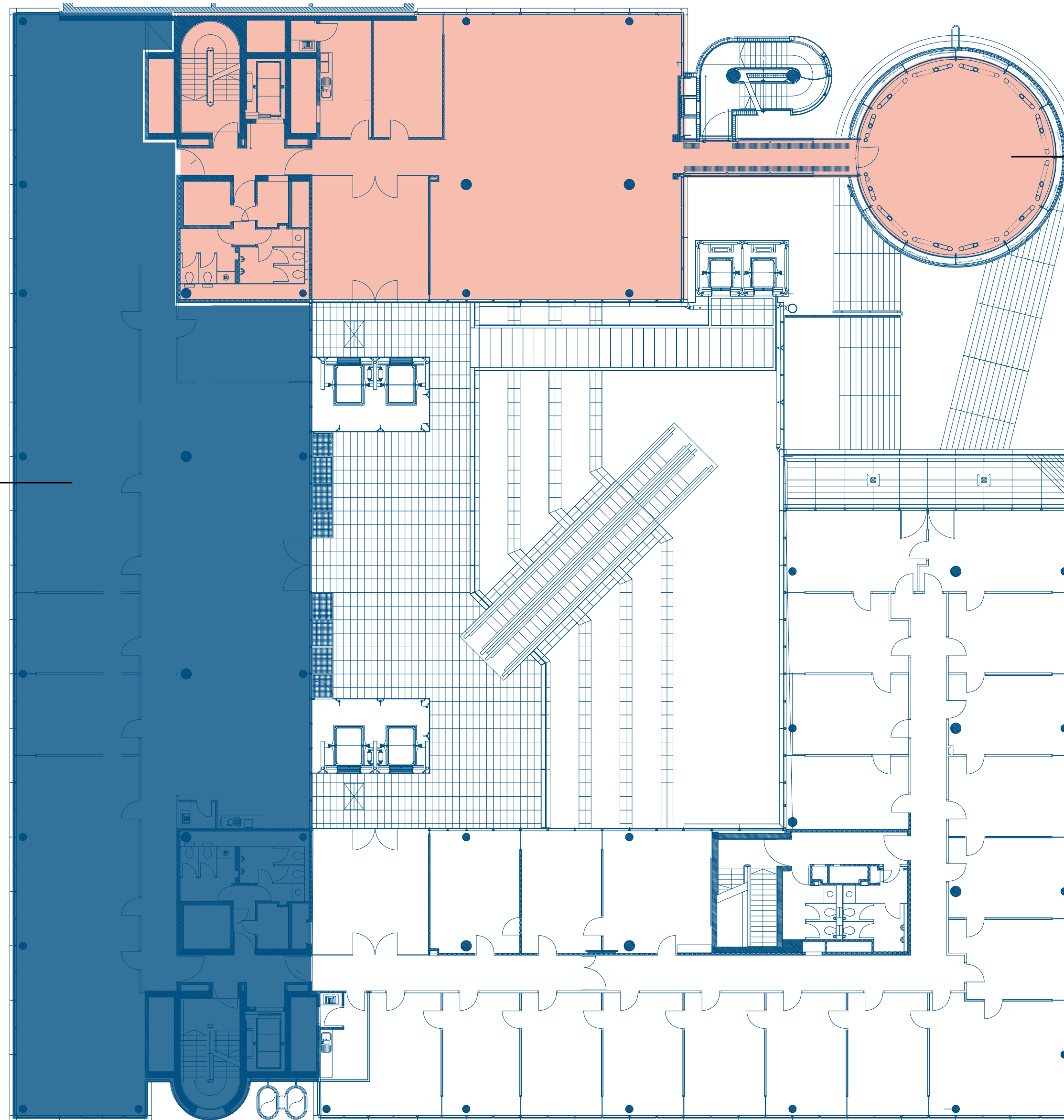
**1,203 m<sup>2</sup>**

Total lettable area approx.

Available from now

● Available Office

**709 m<sup>2</sup>**  
Lettable area approx.



**494 m<sup>2</sup>**  
Lettable area approx.



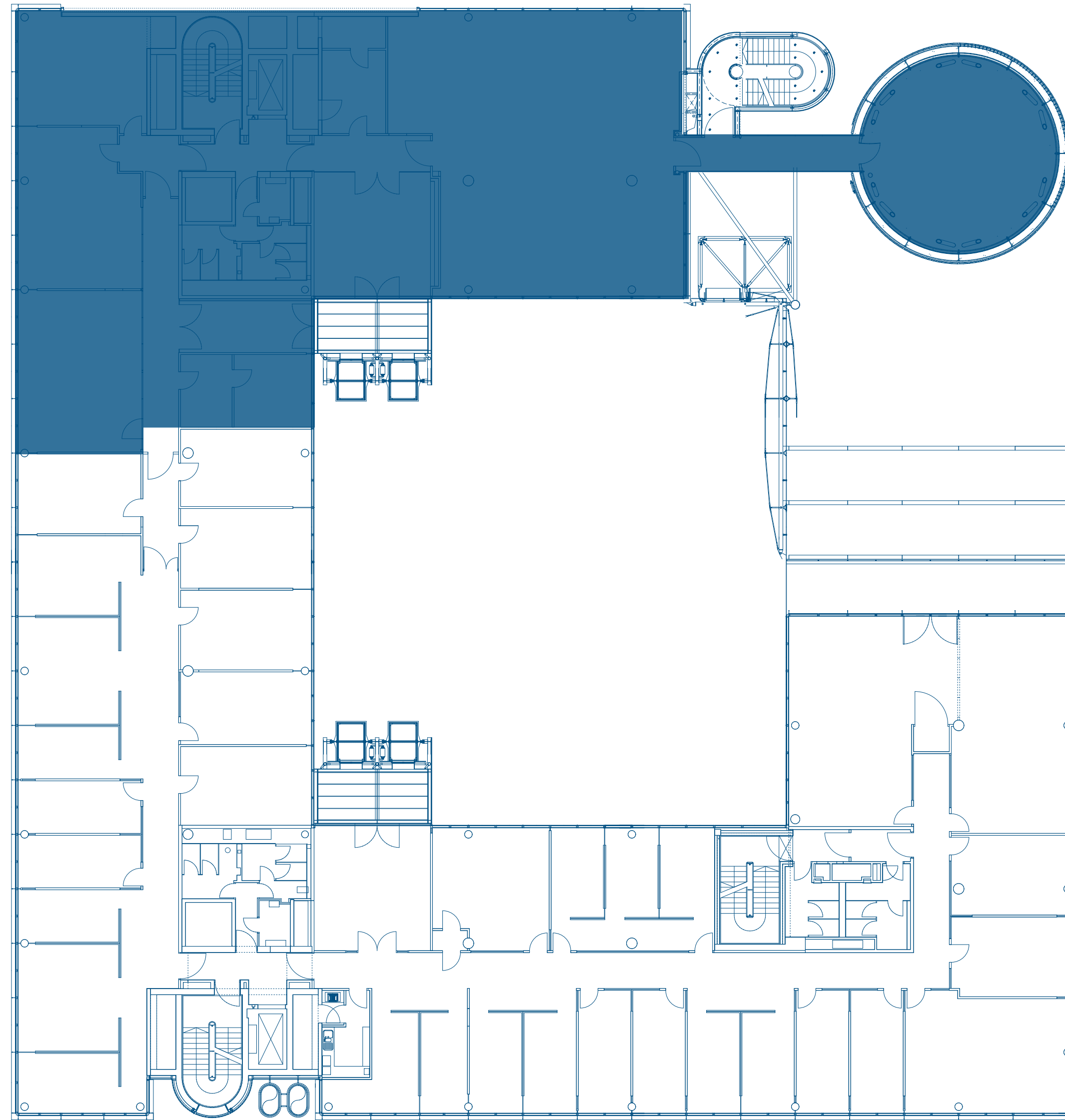
# FOURTH FLOOR

**737 m<sup>2</sup>**

Total lettable area approx.

Available from now

● Available Office









# FIFTH FLOOR

**973 m<sup>2</sup>**

Total lettable area approx.

Available from now

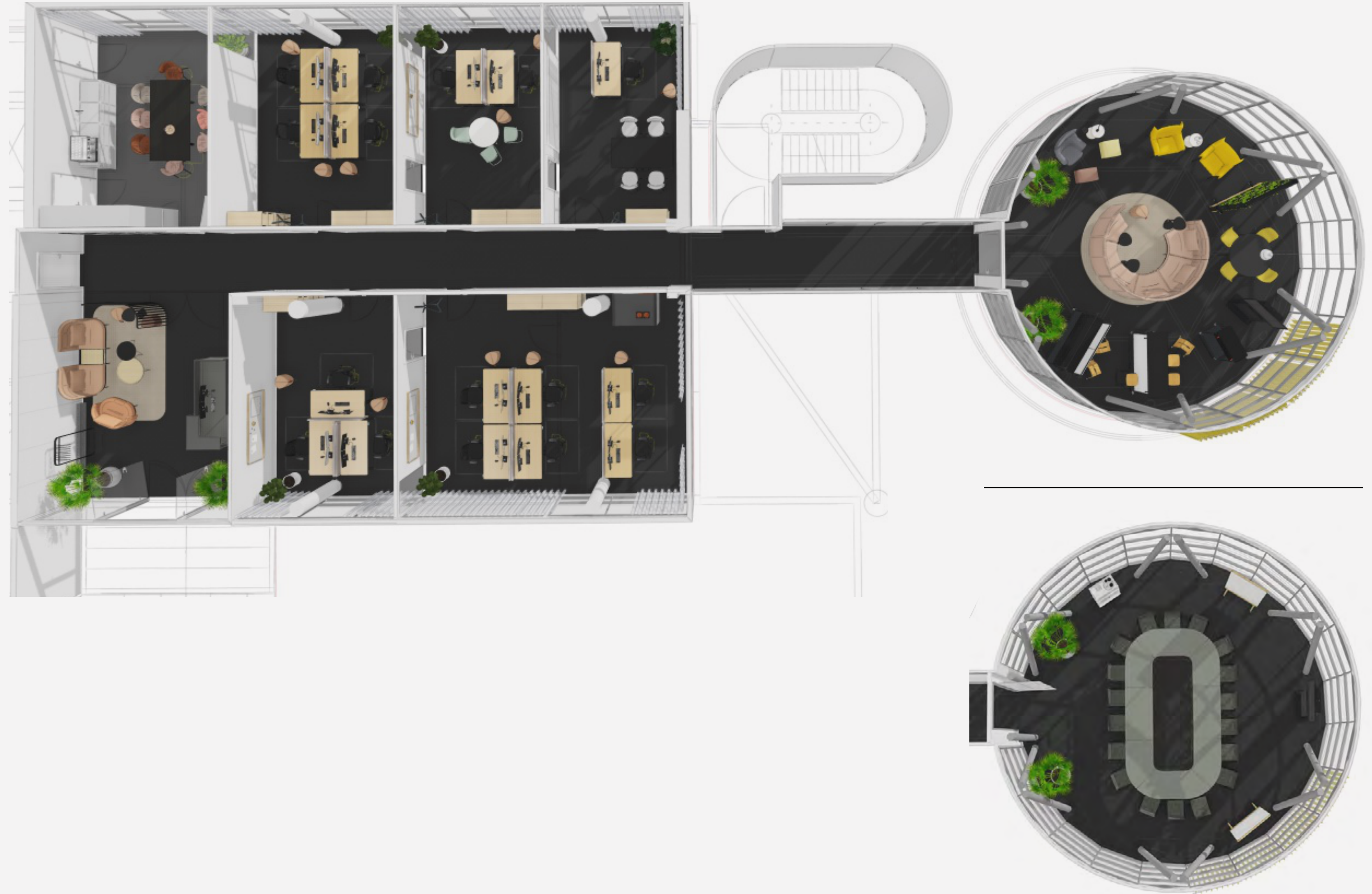
● Available Office





VISUAL

# EXEMPLARY OFFICE





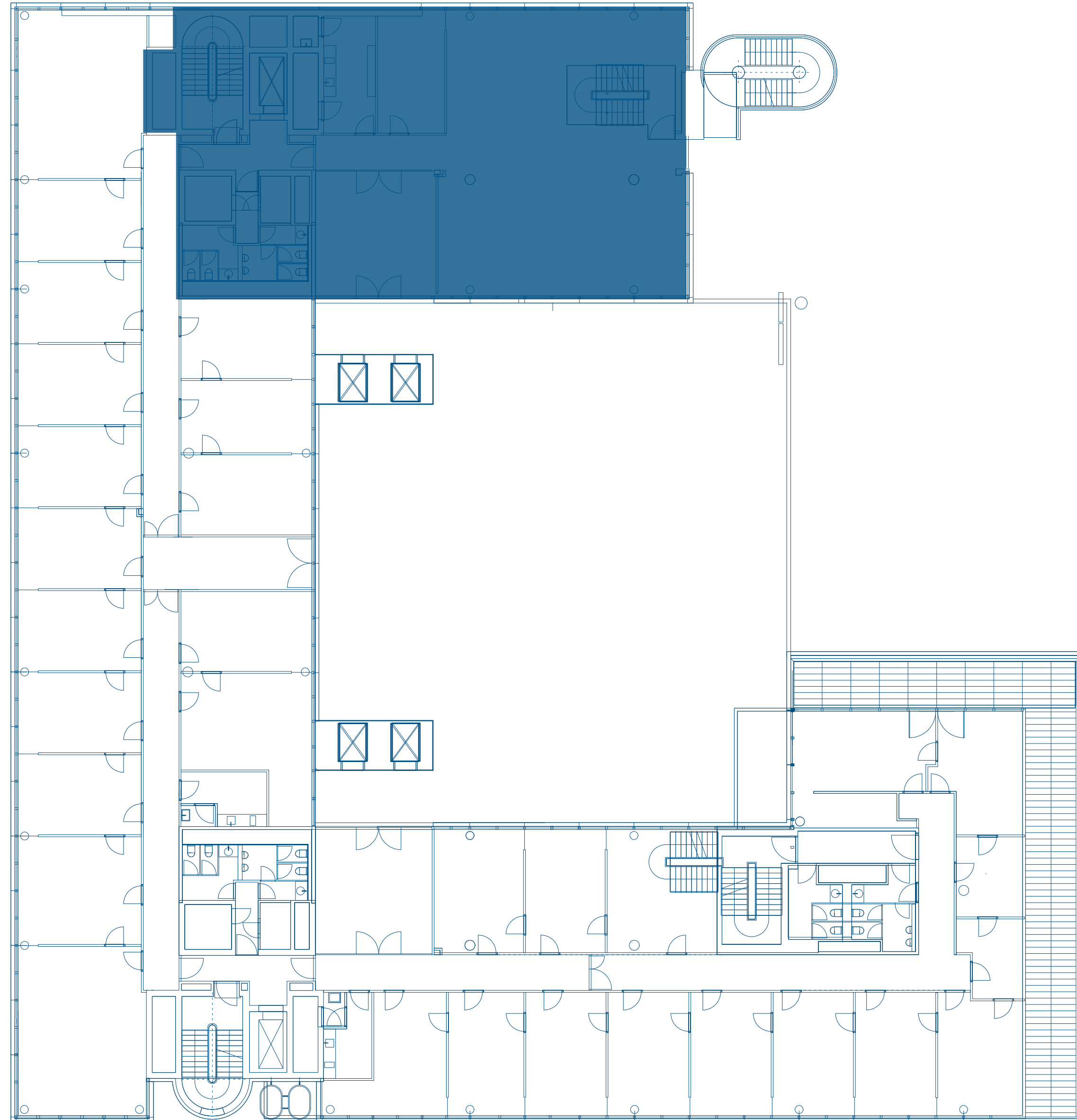
# SIXTH FLOOR

**426 m<sup>2</sup>**

Total lettable area approx.

Available from 08.2024

● Available Office





# SEVENTH FLOOR

**600 m<sup>2</sup>**

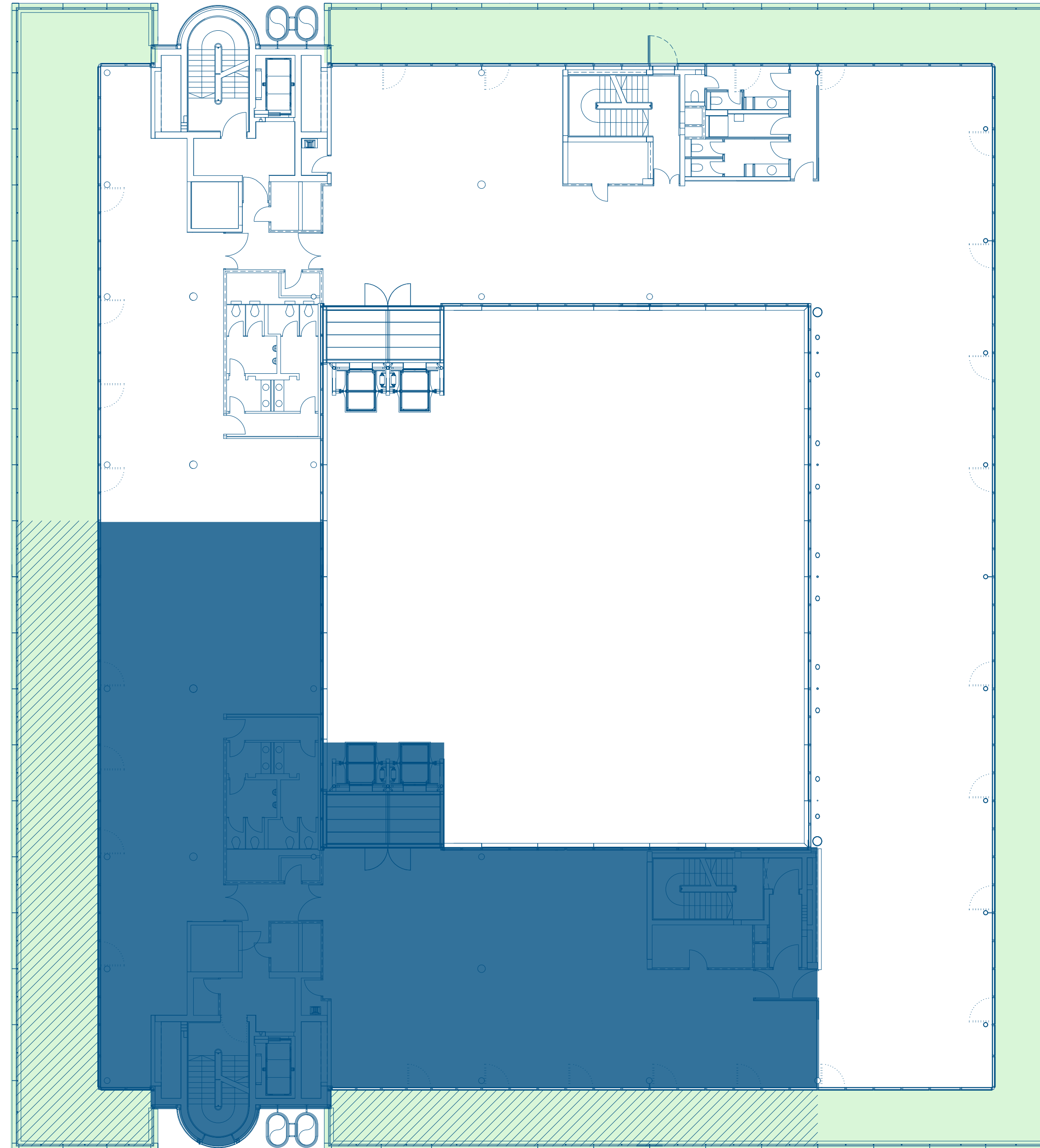
Total lettable area approx.

**94 m<sup>2</sup>**

Terrace

Available from now

- Available Office
- Terrace





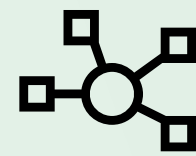




# TECHNICAL INFORMATION



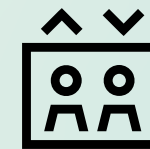
Up to  
**2,75 m**  
Ceiling Heights



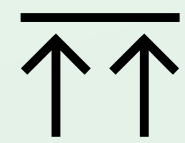
**CAT 7**  
Wiring on Data Network  
+ Telephone Network



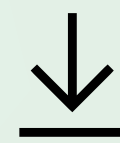
**Well Lit**  
Highly Efficient New  
LED Lighting



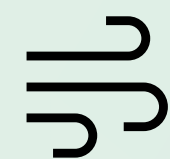
**6**  
Passenger Lifts



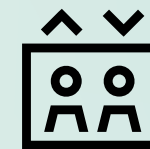
**Raised**  
Floors



**500 kg/m<sup>2</sup>**  
Floor capacity



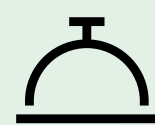
**Airing**  
Filtering, heating, cooling  
on each floor



**Garage**  
Access to garage via elevator



**Rooftop**  
Big rooftop terrace  
on 7<sup>th</sup> floor



**1**  
Main Entrance  
Receptions



**2**  
Goods lift





# SUSTAINABILITY AT POTSDAMER PLATZ

One of the first districts in 2011 to be awarded the DGNB sustainability certification in gold for the use of health and environmentally friendly building materials, the presence of cooling systems and for central waste separation.



## 1.3 ha

approximately of urban water body in the form of a lake as a specifically designed biotope

## 20M

litres of drinking water are saved each year through collected rainwater

## First

district in the city, to implement the Berlin Light Plan

## 50%

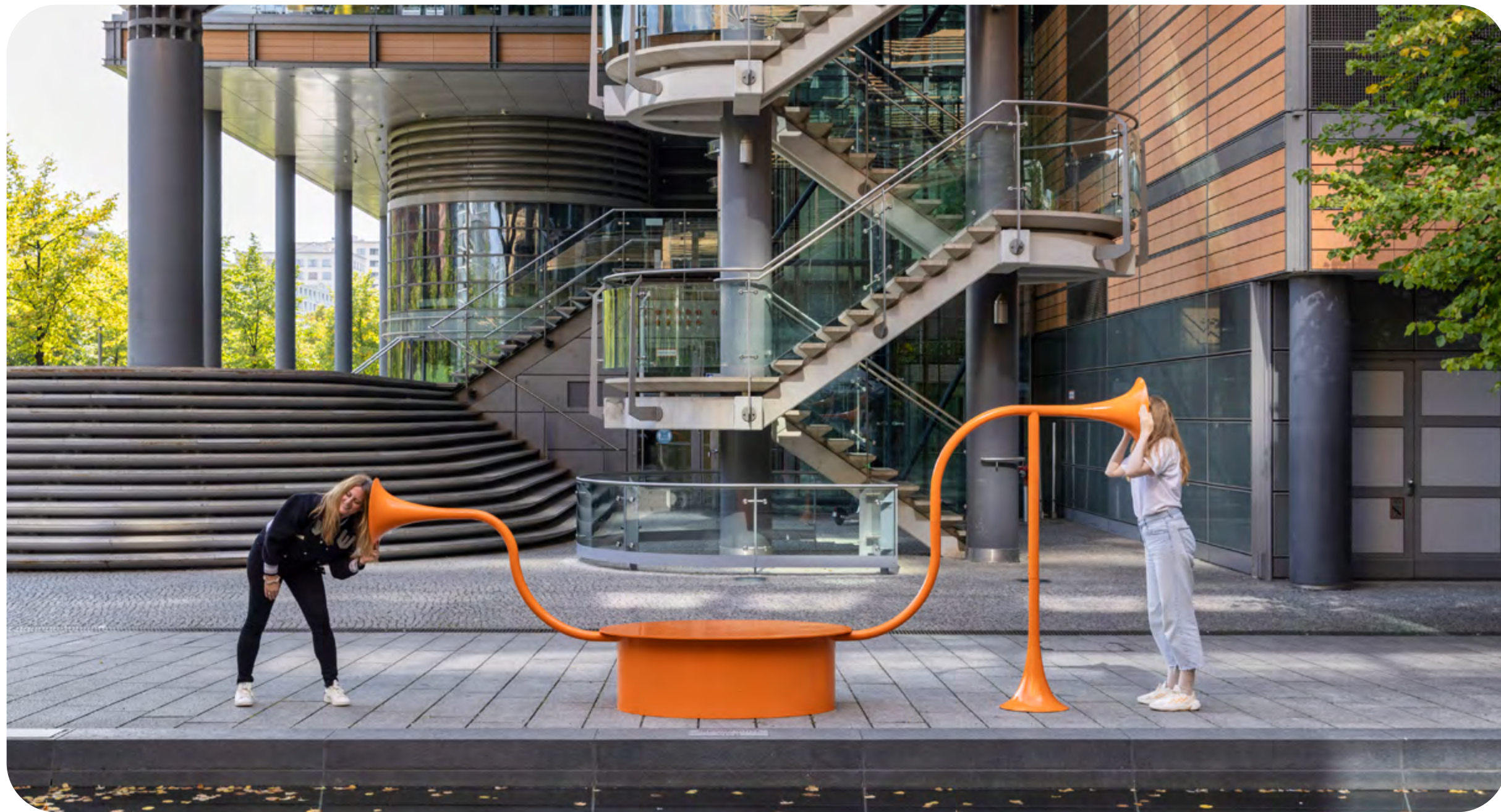
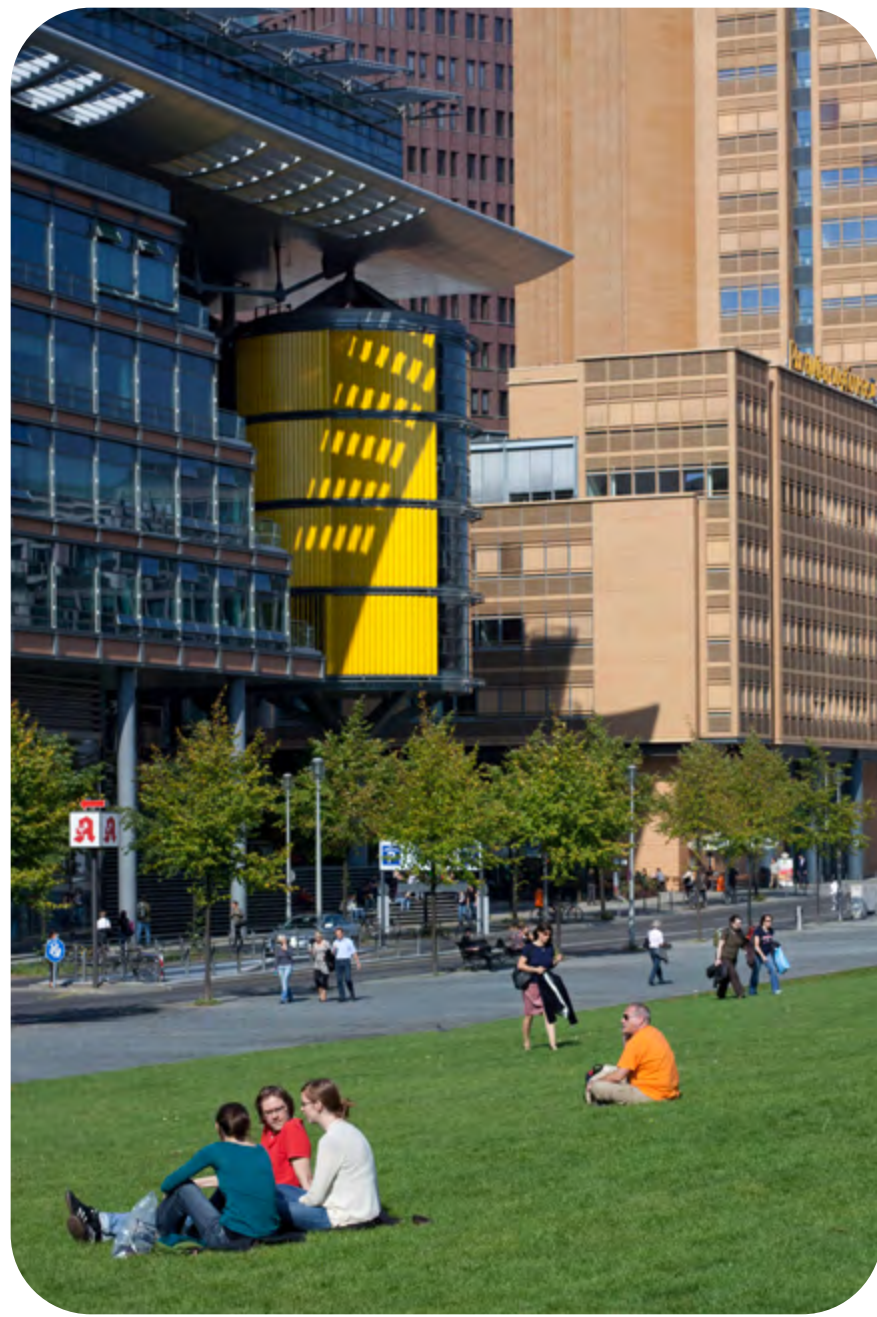
reduction of primary energy through efficient ventilation and façade system



**DGNB**









# POTSDAMER PLATZ

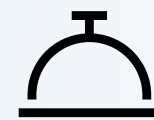
# AMENITIES



**Representative** location with tenants prominently featured in lobbies



**Security service** in the building and area already included in the additional costs



**Receptions** in the buildings



All buildings **wheelchair accessible**



The area offers tenants exclusive rights to use the **yoga classes** and **run clubs** with professional trainers



Various **shopping** and **lunch** options, vegetarian and vegan



**Excellent connection** to public transport as well as local and long-distance transport



**Culture Hub** - various events in the area (Festival of Lights, Berlinale and many more)



**2,000 parking spaces** in the underground car park, access via elevators in the buildings



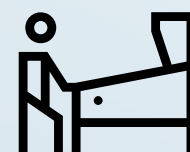
**Bicycle at Potsdamer Platz**  
Extensive bicycle parking and annual bicycle repair for tenants in May



Public Realm, Pedestrian Zone



**2 hotels** with conference facilities



Various **after-work offers**



**DGNB & WELL Health & Safety** certified



**Health center** with various examination/prevention/therapy options





**POTSDAMER  
PLATZ**

## CONTACT

### **KATHARINA TREIBER**

Senior Vice President  
katharina.treiber@brookfieldproperties.com  
+49 172 301 417 0

### **ANTONIA GERMELMANN**

Senior Associate  
antonia.germelmann@brookfieldproperties.com  
+49 174 691 976 6

### **PABLO MOLL**

Analyst  
pablo.moll@brookfieldproperties.com  
+49 176 102 340 46

[potsdamerplatz.de](https://potsdamerplatz.de)

**Brookfield**  
Properties